



# Ministry of Health Uganda

## Weekly Epidemiological Bulletin

Epidemiological week 52 (21st - 27th Dec 2015)

### Highlights of the week

- Cholera outbreak in Kampala, Busia, Wakiso, Mbale districts
- Guinea declared by WHO Ebola free

### Summary Table

Indicator	Week 50 2015	Week 52 2015
% Districts	100	100
Ave % HU	67.2	63
% Timely reports	*	*
AFP	4(0)	1 (0)
Animal bites	240(0)	160 (0)
Cholera	34 (0)	6 (0)
Dysentery	789 (2)	543(1)
Guinea Worm	1(0)	0
Malaria	177460 (32)	125,558 (30)
Measles	111 (0)	60(0)
Meningitis	3 (0)	1 (1)
NNT	0 (0)	1 (0)
Plague	(2) 0	3 (0)
Typhoid	1537 (0)	1298 (0)
MDR TB	9 (0)	12 (2)

\*Indicator not provided

### Completeness of Reporting

This week, all the 112 districts reported with average reporting rate of 63%, a 5 % decline from week 51. Up to 22 districts (20%) achieved the national target of  $\geq 80\%$  of the health facilities reporting. Six districts including Kampala, Buvuma, Kayunga Mubende, Ntoroko and Ntungamo had reporting rates less than 30%. The regional level performance as well as best and worst performing districts in week 52 have been presented in **Figure 1, 2 & 3**. As shown in Figure 3, much as the number of districts with low reporting rates (bottom) have remained low. Over the last quarter, the number of top performing districts (reporting rates  $\geq 90\%$ ) has steadily decreased over the same period.

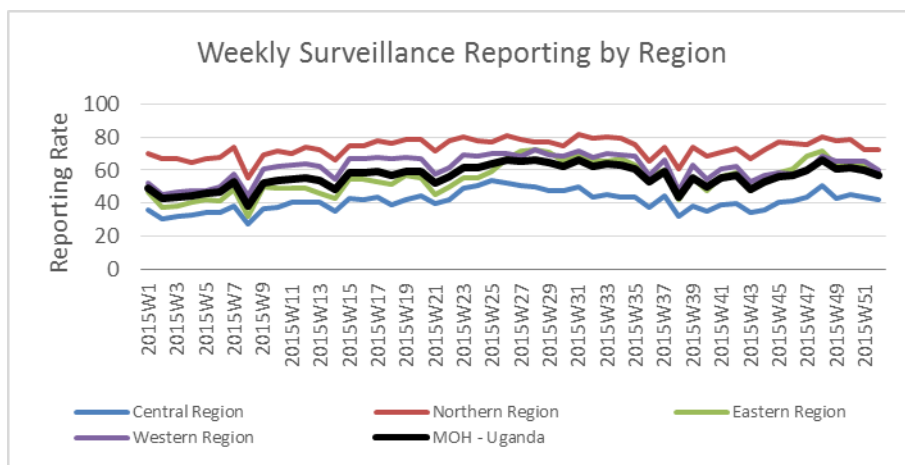


Figure 1: Average reporting level by region for weeks 1-52, 2015

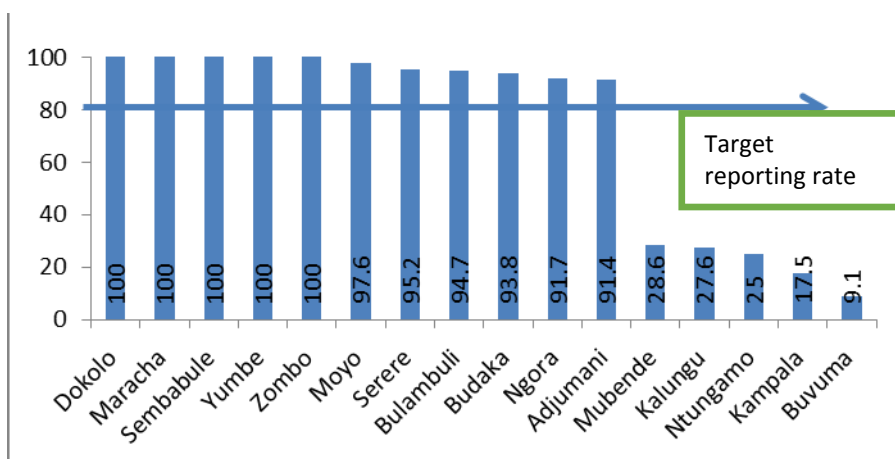


Figure 2: Top and Bottom districts reporting rates

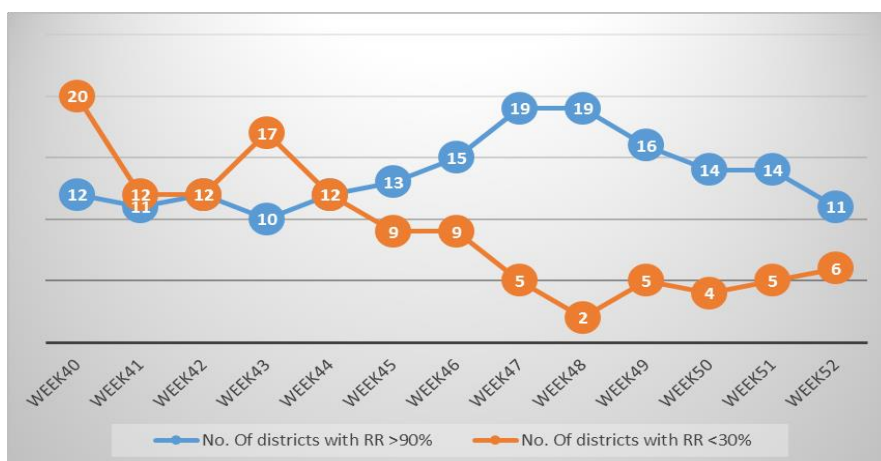


Figure 3: Trends of top and bottom reporting districts; weeks 40-52

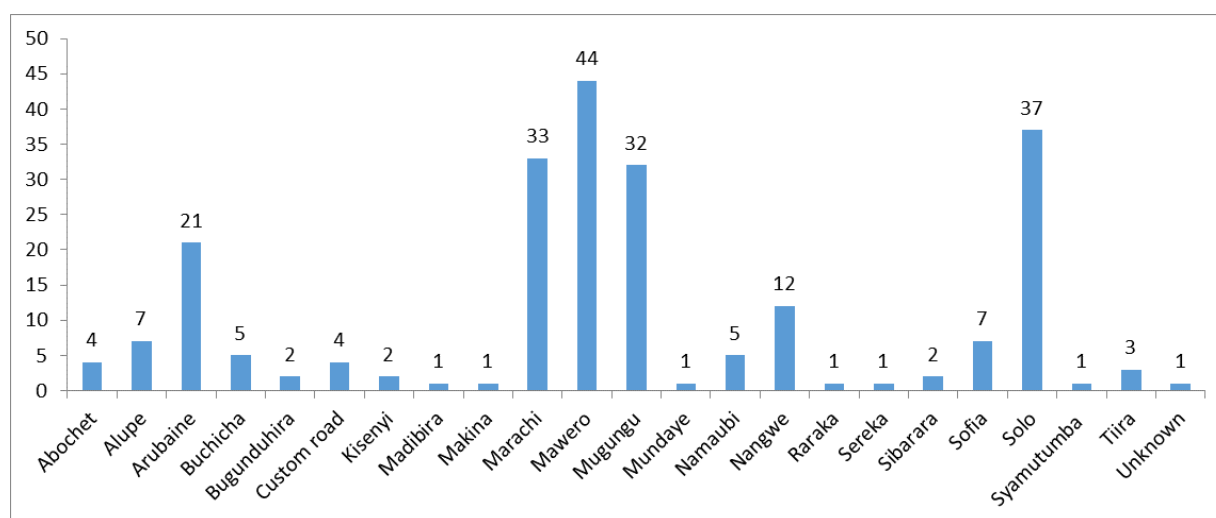
## Disease Outbreaks

### Cholera in Kampala

By 06th January 2015, there were 2 new cholera cases reported in Kampala with no new deaths. Seven (7) cases were still admitted at Mulago Hospital. Cumulatively, 309 (135 female, 171 male) suspected cases of cholera have been treated in Kampala since the beginning of the outbreak, with 7 cumulative deaths (3 in the community and 4 in the health facilities). By residence, Makindye Division is the most affected (106 cases) followed by Centra (83 cases), Kawempe (61 cases) and Nakawa (34 cases).

### Cholera outbreak in Busia district

By 5<sup>th</sup> January 2016, there were



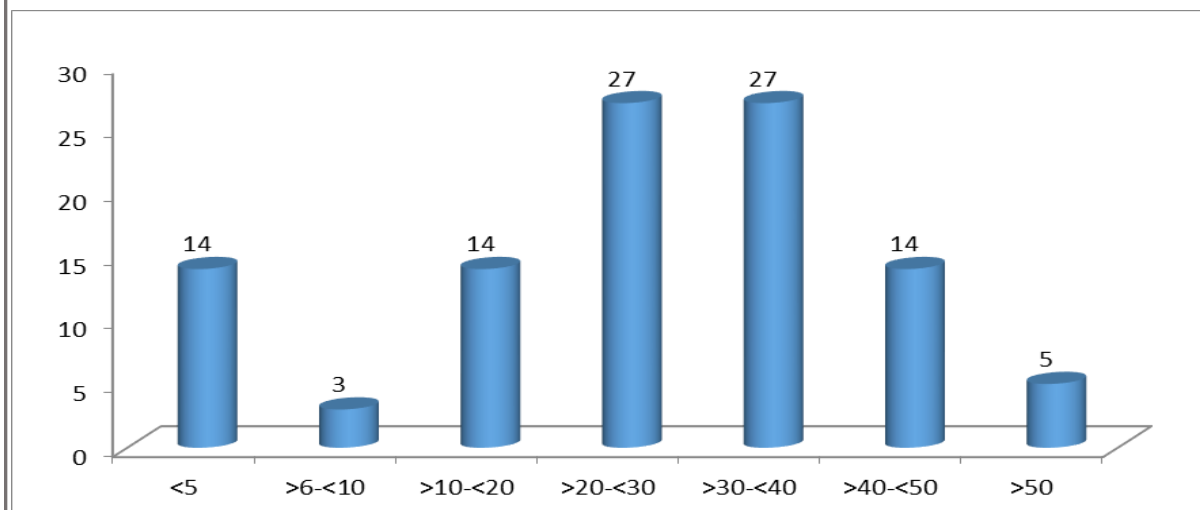
**Figure 4: Residence of cholera patients in Busia district, 2016**

### Cholera Mbale District:

By 05<sup>th</sup> January 2016, there were 64 cases (24 female, 40 males) treated in Mbale district. The national team is in the district supporting outbreak response activities.

### Wakiso district cholera outbreak

The outbreak started in November in Zzinga village, Bussi Sub-county, Wakiso district. By 5<sup>th</sup> December 106 cases had been treated at various centres. The ages most affected were 20 to 40 years (**Figure 5**).

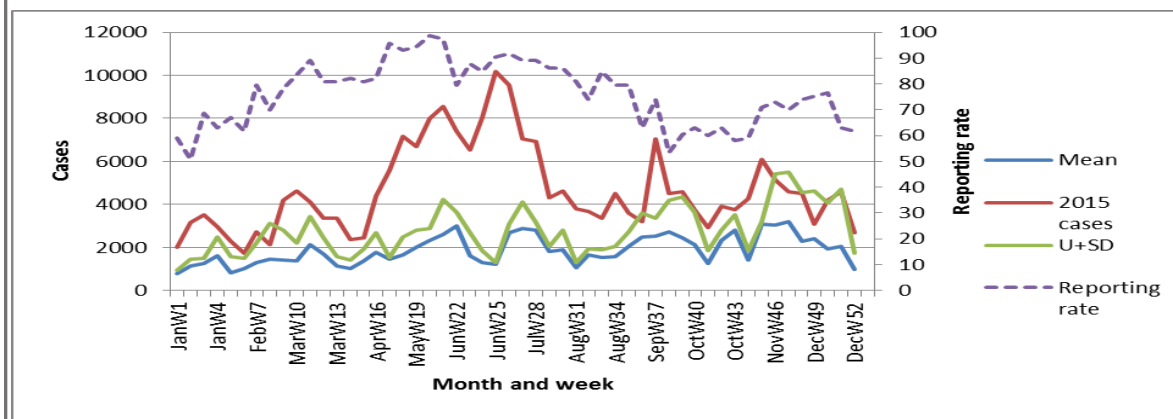


**Figure 5: Age range of cholera patients in Wakiso District**

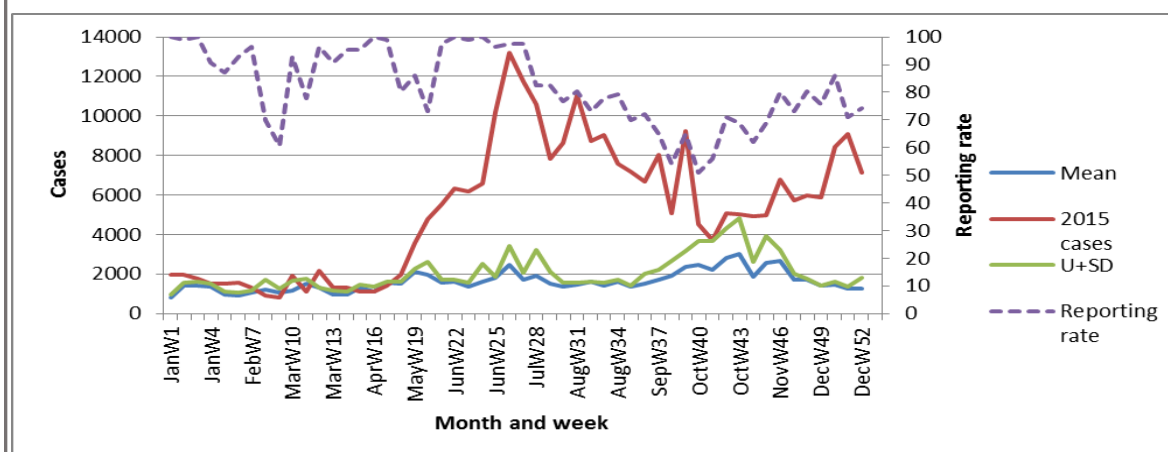
### Malaria:

Reported Malaria cases have remained high, with a decrease in the number of cases in week 52. The case fatality rate remained low at about 0.023%. The epidemic districts in Northern Uganda remain above the

respective Malaria normal channels except for Arua district as shown in **Figure 6** below. However, even in Arua the number of cases has been noted to be on the increase even if they are within the normal channel. Important to note is the fact that five (5) districts including **Kamwenge, Mbale, Mubende, Nebbi and Ntungamo districts** have documented an increase in malaria cases of more than 1000 in week 52 compared to week 50. **Gulu district** has continued to report the highest number of cases among the districts with confirmed epidemic, although there they did not report any malaria related deaths (**Figure 7**).



**Figure 6: Malaria normal channel and reporting rates for Arua district for week 52**

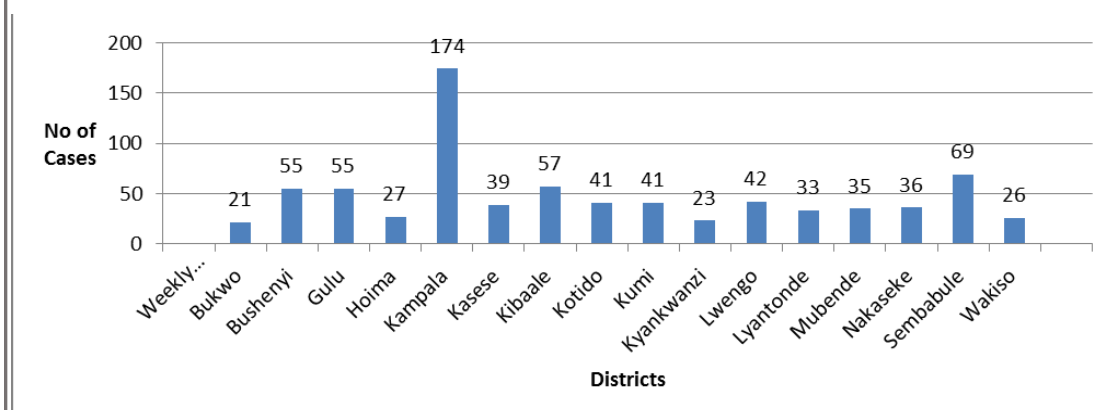


**Figure 7: Malaria normal channel and reporting rates for Gulu district for week 52.** The cases are way above the normal channel (threshold) despite a good reporting rate, showing that the district continues in outbreak phase.

### Other priority diseases

**AFP:** There was only 1 case of AFP reported this week in Wakiso district with no death.

**Typhoid fever:** The number of reported typhoid cases continues to be high. In week 49, there was a gradual decrease in the number of typhoid cases reported by 44.5% from that reported in week 48 with only 18 districts reporting 20 or more cases as shown in the **Figure 6** below. In week 52, Kampala reported the highest number of cases (174).



**Figure 6: Districts reporting typhoid beyond the 20 cases threshold**

**Measles:** A total of 60 cases of measles were reported during this week. Only two districts: Kampala and Kiboga reported case above the alert threshold, with 7 and 5 cases respectively.

**Maternal and perinatal deaths:** Three (3) maternal deaths were recorded in this week from three health facilities (**Table 2**). All facilities submitted the maternal audit forms for follow up surveillance.

**Table 2: Reported maternal deaths in week 52**

Region	District	Sub-county	Health facility	No of maternal Deaths
Central	Kyegegwa	Hapuuyo Sub-county	Kigambo HC III	1
Northern	Lira	Adyel Division	Lira Regional Referral Hospital	1
Eastern	Bugiri	Bugiri Town council	Bugiri Hospital	1

### International Health Event

#### Ebola VHF in West Africa

There were no confirmed cases of Ebola virus disease (EVD) reported in the week ending 27<sup>th</sup> December. On 29<sup>th</sup> December, WHO declared that human-to-human transmission of Ebola virus had ended in Guinea. This was after the completion of 42 days with zero cases since the last person confirmed to have EVD received a second consecutive negative blood test for Ebola virus RNA. Guinea has now entered a 90-day period of heightened surveillance.

Human-to-human transmission linked to the most recent cluster of cases in Liberia will be declared to have ended on 14 January 2016, 42 days after the 2 most-recent cases received a second consecutive negative test for Ebola virus, if no further cases are reported.

In Sierra Leone, human-to-human transmission linked to the primary outbreak was declared to have ended on 7 November 2015. The country has now entered a 90-day period of enhanced surveillance scheduled to conclude on 5 February 2016. The most recent cluster of cases in Liberia was the result of the re-emergence of Ebola virus that had persisted in a previously infected individual. Although the probability of such re-emergence events is low, the risk of further transmission following a re-emergence underscores the importance of implementing a comprehensive package of services for survivors that includes the testing of appropriate bodily fluids for the presence of Ebola virus RNA. <http://apps.who.int/ebola/current-situation/ebola-situation-report-6-january-2016>

**Editorial:** Mr. J. Kissa, Dr. B. Masiira, Dr C.Kihembo, Joyce Nguna, Dr. M. Musenero, Mr. M. Mugagga, Dr. J. Wamala, Dr. I. Makumbi, Dr. R. Musoke, Dr. J. Sekajugo, Dr. F. Adatu, Dr. C. Okot, Dr. M. Nanyunja, Dr. I. Nabukenya

**Founders:** Dr. J. Kamugisha (RIP), Dr. J. Wanyana, Dr. M. Lamunu, Dr. C. Mugero, Dr. N Ndayimirigye, Mr. L. Luswa (RIP), Dr. N. Bakyaita, Mr. M. Mugagga

*For comments please contact: The Epidemiological Surveillance Division- M.O.H; P.O BOX 7272 Kampala, Tel: 0414-340874/0414-345108; Email: [esd@health.go.ug](mailto:esd@health.go.ug) or [esduganda@yahoo.co.uk](mailto:esduganda@yahoo.co.uk)*

# Summary table for epidemiological reports received for week 52 (21<sup>st</sup> - 27<sup>th</sup> December 2015)

(Numbers in brackets indicate deaths)

District	% HU Reporting	Malaria	Dysentery	AFP	Animal Bites	Bacterial Meningitis	Cholera	Guinea Worm	Measles	Neonatal Tetanus	Plague	Typhoid Fever
Abim	60	382	2	0	0	0	0	0	0	0	0	2
Adjumani	91.4	3302(1)	28	0	1	0	0	0	0	0	0	0
Agago	76.5	1,882	14	0	0	0	0	0	0	0	0	0
Alebtong	72.2	397	3	0	0	0	0	0	0	0	0	0
Amolatar	76.9	133	2	0	0	0	0	0	0	0	0	6
Amudat	62.5	186	0	0	0	0	0	0	0	0	0	0
Amuria	43.6	1,419	1	0	0	0	0	0	1	0	0	0
Amuru	75	3,007	15	0	0	0	0	0	1	0	0	0
Apac	48.6	1,540	0	0	3	0	0	0	0	0	0	0
Arua	61.6	2698(1)	15	0	6	0	0	0	0	0	0	17
Budaka	93.8	586	2	0	1	0	0	0	0	0	0	6
Bududa	80	326	4	0	2	0	0	0	0	0	0	1
Bugiri	66	1,419	9	0	1	0	0	0	1	0	0	16
Buhweju	82.4	143	0	0	0	0	0	0	0	0	0	0
Buikwe	47.2	1,064	8	0	2	0	0	0	4	0	0	19
Bukedea	75	837	2	0	0	0	0	0	0	0	0	0
Bukomansimbi	76.5	498	0	0	0	0	0	0	0	0	0	2
Bukwo	87.5	95	2	0	0	0	0	0	0	0	0	21
Bulambuli	94.7	375	0	0	0	0	0	0	0	0	0	0
Buliisa	81.8	381	2	0	1	0	0	0	1	0	0	10
Bundibugyo	66.7	991	8	0	3	0	0	0	0	0	0	18
Bushenyi	84.6	821(1)	1	0	4	0	0	0	0	0	0	55
Busia	65.5	1,183	0	0	0	0	0	0	0	0	0	16
Butaleja	50	462	1	0	0	0	0	0	0	0	0	3
Butambala	73.9	314	2	0	1	0	0	0	0	0	0	0
Buvuma	27.3	80	3	0	1	0	0	0	0	0	0	0
Buyende	68.2	786	1	0	0	0	0	0	0	0	0	0
Dokolo	100	633	2	0	0	0	0	0	0	0	0	4
Gomba	57.9	420	0	0	1	0	0	0	0	0	0	1
Gulu	74.4	7,153	53	0	8	0	0	0	0	0	0	55
Hoima	31.8	839	2	0	3	0	0	0	0	0	0	27
Ibanda	76	2,070	0	0	1	0	0	0	1	0	0	1
Iganga	55.4	2050(3)	2	0	0	0	0	0	0	0	0	11
Isingiro	75.7	2,295	6	0	1	0	0	0	2	0	0	9
Jinja	46.2	1962(4)	4	0	3	0	0	0	0	0	0	10
Kaabong	81.5	590(1)	5	0	0	0	0	0	0	0	0	2
Kabale	75.4	552(1)	0	0	5	0	0	0	0	0	0	0
Kabarole	40.8	980(4)	4	0	0	0	0	0	0	0	0	4
Kaberamaido	76	614	3	0	2	0	0	0	0	0	0	0
Kalangala	47.1	64	2	0	0	0	0	0	0	0	0	3
Kaliro	38.1	253	0	0	0	0	0	0	0	0	0	5
Kalungu	37.9	239	0	0	0	0	0	0	0	0	0	3

Kampala	19.9	907	4	0	12	0	5	0	7	0	0	174
Kamuli	47.5	1,914	8	0	1	0	0	0	0	0	0	7
Kamwenge	50	1,913	4	0	1	0	0	0	4	0	0	1
Kanungu	43.8	460	0	0	0	0	0	0	0	0	0	8
Kapchorwa	80	347	6	0	0	0	0	0	0	0	0	4
Kasese	85.7	4328(2)	15	0	3	0	0	0	0	1	0	39
Katakwi	53.8	971	4	0	1	0	0	0	0	0	0	0
Kayunga	28.6	737	1	0	1	0	0	0	1	0	0	2
Kibaale	54.9	1,688	2	0	0	0	0	0	2	0	0	57
Kiboga	46.7	517	0	0	2	0	0	0	5	0	0	13
Kibuku	80	337	1	0	0	0	0	0	0	0	0	0
Kiruhura	60.5	1,435	0	0	2	0	0	0	0	0	0	0
Kiryandongo	57.7	1,090	1	0	0	0	0	0	0	0	0	6
Kisoro	89.5	157	1	0	1	1	0	0	0	0	0	5
Kitgum	53.6	2,357	15	0	2	0	0	0	0	0	0	13
Koboko	87.5	1,125	1	0	0	0	0	0	0	0	0	0
Kole	72.7	687	0	0	1	0	0	0	0	0	0	0
Kotido	31.6	294	24	0	0	0	0	0	0	0	0	41
Kumi	55.6	1,608	6	0	0	0	0	0	0	0	0	41
Kween	41.7	254	3	0	0	0	0	0	0	0	0	2
Kyankwanzi	68	691	0	0	1	0	0	0	2	0	0	23
Kyegegwa	53.3	938	2	0	0	0	0	0	0	0	0	5
Kyenjojo	40.4	643	4	0	2	0	0	0	2	0	0	0
Lamwo	81	2590(1)	1	0	0	0	0	0	0	0	0	0
Lira	78.1	928(2)	49(1)	0	9	0	0	0	3	0	0	9
Luuka	38.7	746	0	0	0	0	0	0	0	0	0	0
Luwero	52.7	1227(1)	6	0	3	0	0	0	2	0	0	19
Lwengo	77.4	986	1	0	1	0	0	0	1	0	0	42
Lyantonde	56.7	740	1	0	2	0	0	0	1	0	0	33
Manafwa	62.5	480	1	0	1	0	0	0	0	0	0	0
Maracha	100	1,446	4	0	0	0	0	0	0	0	0	9
Masaka	35.9	591	2	0	0	0	0	0	1	0	0	3
Masindi	81.4	1,427	8	0	5	0	0	0	1	0	0	13
Mayuge	50	1,299	6	0	0	0	0	0	0	0	0	3
Mbale	50.9	809	3	0	0	0	0	0	0	0	0	1
Mbarara	67.2	949	10	0	7	0	0	0	0	0	0	19
Mitooma	62.5	562	0	0	0	0	0	0	0	0	0	0
Mityana	45.8	1228(1)	3	0	3	0	0	0	3	0	0	0
Moroto	40	494	1	0	7	0	1	0	0	0	0	3
Moyo	97.6	2,987	12	0	1	0	0	0	0	0	0	16
Mpigi	70	795	3	0	1	0	0	0	0	0	0	8
Mubende	28.6	1,166	5	0	1	0	0	0	0	0	0	35
Mukono	57.1	1,356	3	0	1	0	0	0	0	0	0	8
Nakapiripirit	58.8	609	10	0	2	0	0	0	0	0	0	0
Nakaseke	75	881	7	0	7	0	0	0	1	0	0	36
Nakasongola	51.4	1,004	3	0	0	0	0	0	1	0	0	2
Namayingo	53.1	1,137	5	0	0	0	0	0	2	0	0	3
Namutumba	58.8	977	0	0	0	0	0	0	0	0	0	0
Napak	64.3	736	10	0	3	0	0	0	0	0	0	0

Nebbi	79.1	2658(3)	14	0	1	0	0	0	0	0	0	6
Ngora	91.7	581	0	0	2	0	0	0	0	0	0	0
Ntoroko	22.2		0	0	0	0	0	0	0	0	0	0
Ntungamo	25	141	0	0	0	0	0	0	0	0	0	0
Nwoya	88.9	1,275	1	0	0	0	0	0	0	0	0	0
Otuke	73.3	428	5	0	0	0	0	0	2	0	1	1
Oyam	58.1	1346(1)	2	0	5	0	0	0	0	0	0	1
Pader	43.6	2,168	8	0	0	0	0	0	0	0	0	6
Pallisa	48.5	749(1)	2	0	4	0	0	0	0	0	0	11
Rakai	57	2,990	2	0	0	0	0	0	2	0	0	15
Rubirizi	47.4	275	0	0	0	0	0	0	0	0	0	1
Rukungiri	41.6	555	0	0	1	0	0	0	0	0	0	10
Sembabule	100	1,496	1	0	1	0	0	0	2	0	0	69
Serere	95.2	1401(1)	2	0	0	0	0	0	0	0	0	2
Sheema	44.1	176	0	0	1	0	0	0	0	0	0	0
Sironko	76.7	954	3	0	0	0	0	0	0	0	0	0
Soroti	58.3	2,345	4	0	3	0	0	0	1	0	3	16
Tororo	56.9	456	2	0	0	0	0	0	0	0	0	0
Wakiso	35.5	1,926	11	1	4	0	0	0	2	0	0	26
Yumbe	100	2837(1)	15	0	3	0	0	0	0	0	0	14
Zombo	100	1,232	7	0	1	0	0	0	1	0	0	3
<b>National</b>	<b>63</b>	<b>125,558 (30)</b>	<b>494</b>	<b>1</b>	<b>160</b>	<b>1</b>	<b>6</b>	<b>0</b>	<b>60</b>	<b>1</b>	<b>4</b>	<b>1211</b>

**Key:** Yellow: 100% reporting, Green: 80-99% reporting, Red: Below 80% reporting

HU= Health Units, AFP=Acute Flaccid Paralysis, NNT=Neonatal Tetanus, NR =Not Reported

**Compiled by the Epidemiological Surveillance Division, Ministry of Health**